

BDCW Side Stand Mount

KTM 950 / 990 (excluding 03-04 ADV)



Installation Instructions



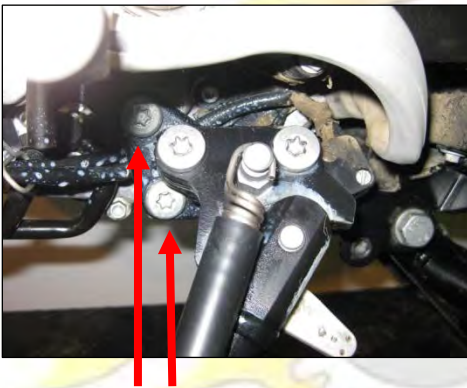
Tools Required:

- Ratchet
- Torque wrench (45Nm)
- 10mm socket
- 13mm socket
- 17mm socket
- 6mm allen wrench or socket
- 13mm wrench
- 17mm wrench
- t-45 socket or wrench (990 only)
- Blue loc-tite
- Red loc-tite

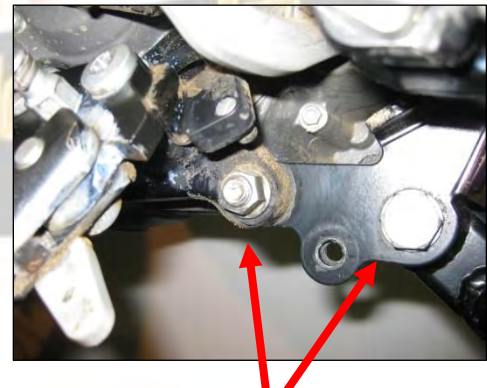
A. PREPARATION

Before you begin you must make sure your motorcycle is supported vertically since both the center-stand and side-stand will either be removed or loosened. This can be accomplished a variety of ways, including a service stand with a front wheel clamp, a motorcycle lift, or simply leaning it against the wall with a strap holding it in place so it won't fall over during installation. Make sure the bike is prevented from rolling while working on the bike using this method. **PLEASE USE CAUTION!!!**

B. DISASSEMBLY



Remove these two bolts from the front of the side stand



Remove the rear bolt for the side stand and the left bolt from the center stand (if applicable)

1. Remove the skid plate from bike to ease access.
2. Remove the left side center stand bolt using a 17mm socket. You will not reuse this bolt. This will be replaced with the provided M10x60 bolt during step ASSEMBLY STEP #5. You may need to wiggle the center stand a bit to get the bolt out.
3. Remove the rear engine mount bolt using a 13mm socket and 13mm wrench. . You will not reuse this bolt. This will be replaced with the provided M10x180 bolt during step ASSEMBLY STEP #3 and you will reuse the stock nut in ASSEMBLY STEP # 2

4. Remove the two bolts that secure the side stand mounting casting to the engine (13mm socket on 950 or T-45 on 990). At this point the side stand is off the bike. There is no need to disassemble it further or remove the safety switch. Set it aside without stretching the wiring.

C. ASSEMBLY

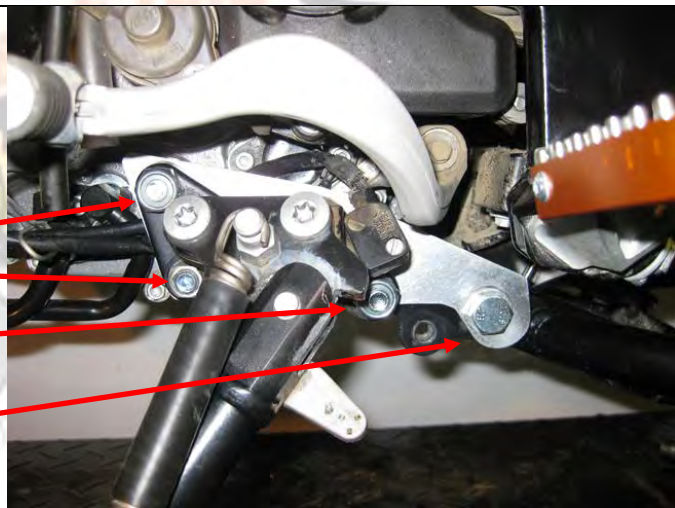
1. Place a drop of “red loc-tite” on the two provided M10x30 countersunk bolts. Install these bolts through the back of the mounting plate into the countersunk holes.
2. Place the side-stand casting on the side stand mounting bracket and pass the countersunk screws through the 2 holes that originally held the bolts that went into the engine casing. Use the provided M10 locknut on the top bolt. On the lower bolt, use the stock nut that was removed from the rear engine bolt (DISASSEMBLY STEP #2) as there is minimal clearance available. Tighten both bolts to 45 Nm. This step will require a 6mm allen wrench, 13mm socket, 17mm socket and a torque wrench to tighten both bolts. Make sure the middle hole on the bracket is lined up with the rear hole on the side stand casting.
3. Place a drop of “blue loc-tite” on the provided M10 x 180 hex bolt. Install this bolt into the rear engine mount from the right side of the bike.
4. Set the mounting bracket in place **ensuring that the SIDE STAND SWITCH WIRE is routed so it is not compressed between the side stand mount bracket and the engine block!!** The engine mount bolt goes through the middle hole in the bracket. Secure this bolt with one of the provided M10 lock-nuts. Do not tighten yet.
5. Place a drop of “blue loc-tite” on the provided M10x60 hex bolt. Install this bolt through the rear hole in the bracket and through the center-stand and thread into the center stand mount.
6. Torque the rear engine bolt and left center stand bolt to 45 Nm.
7. Periodically check these and all bolts on the motorcycle to ensure they are tight.

Properly installed side stand mount

Two countersunk bolts here

M10x 180 through bolt here:

M10x60 bolt through center
stand frame here



DISCLAIMER: The side-stand is now isolated from the engine. Although it is not possible to completely eliminate the possibility of the side stand damaging the engine case from a direct impact to the side stand without removing it entirely. This should dramatically reduce the chances of breaking the engine case if the side-stand is hit by a rock or is someone puts their weight in the bike supported by the stand. (Not recommended with or without the bracket!!). Black Dog Cycle Works is not responsible for the incorrect installation, use or modification of this product.