

ROTTWEILER PERFORMANCE

690/701 REAR MASTER CYLINDER GUARD

NOTE



Please read and understand all notes, precautions and warnings within this document before performing these procedures. It is solely you and/or the installer's responsibility to adhere to the guidelines of all factory torque specs and procedures mandated by the manufacturer of your motorcycle. Always wear the appropriate safety equipment. If you believe that these instructions are beyond your capabilities, you should seek out a professionally trained motorcycle mechanic to install any aftermarket product/s including these.

- **Time:** 10-20 minutes depending on experience.
- **Tools needed:**
 - 4mm HEX
 - 5mm HEX
 - 8mm WRENCH
 - 10mm SOCKET

ONLINE INSTRUCTIONS QR CODE LINKS

Scan these codes with your smart phone's camera or a QR code reader to get direct links to online versions of these instructions.

These Instructions here.





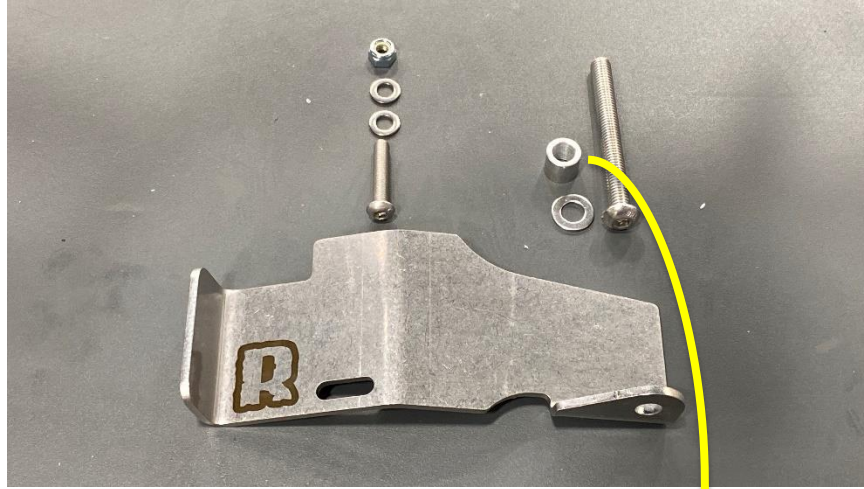
INSTRUCTIONS

(8mm WRENCH + 10mm SOCKET) Remove the rear 6mm nut and bolt and the foot bracket assembly bolt shown below.





Gather the parts from the kit shown below.



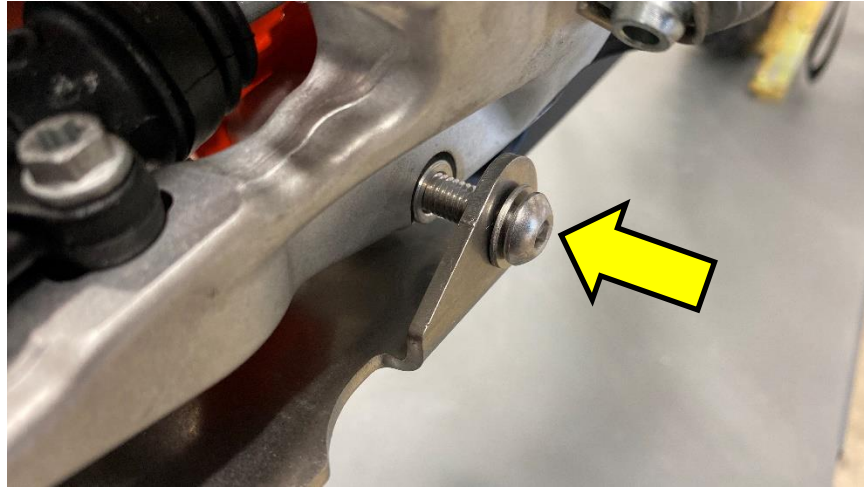
Load the provided aluminum spacer I to the foot bracket cavity.



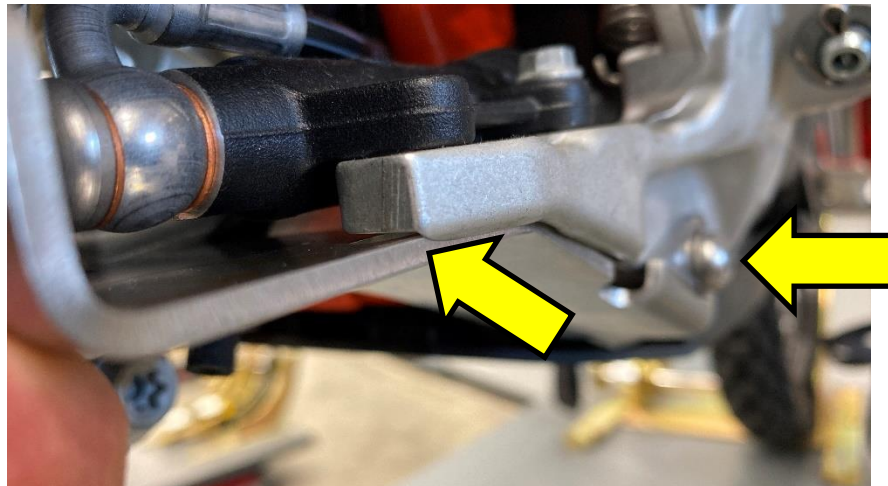


(5mm HEX + ANTI SEIZE COMPOUND) Using the 8mm bolt and washer, thread in the Rottweiler Performance Rear Master Cylinder Guard as shown below.

IMPORTANT: We use stainless bolts for their anti-corrosive characteristics. Use of anti-seize or grease on this bolt is a good idea as it is Stainless and may gall if assembled dry.



(5mm HEX) Snug the 8mm bolt, nesting the RMCG into the machined part of the foot bracket.





(4mm HEX + 10mm WRENCH) Insert the 6mm bolt and washer from the bottom and a washer and nut from the top and tighten all hardware.



NOW GO RIDE!