



ROTTWEILER PERFORMANCE

BILLET SPIGOT AND SPIGOT GUARD INSTRUCTIONS

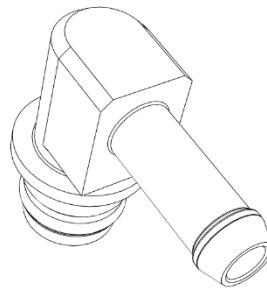
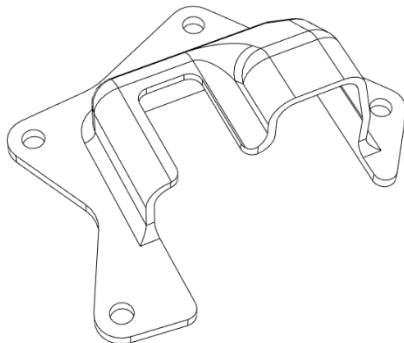


Note: Please read and understand all notes, precautions and warnings within this document before performing these procedures. It is solely you and/or the installer's responsibility to adhere to the guidelines of all factory torque specs and procedures mandated by the manufacturer of your motorcycle. Always wear the appropriate safety equipment. If you believe that these instructions are beyond your capabilities, you should seek out a professionally trained motorcycle mechanic to install any aftermarket product/s including these.

- **Installation time:** 10 minutes
- **Tools needed:** (Most can be found in your stock tool kit)
 - T10 TORX
 - T30 TORX
 - 10mm WRENCH
 - PLIERS
 - CUTTERS
 - CLEAN BUCKET FOR FUEL
 - SAFETY GLASSES
 - RUBBER GLOVES

ONLINE INSTRUCTIONS QR CODE LINKS

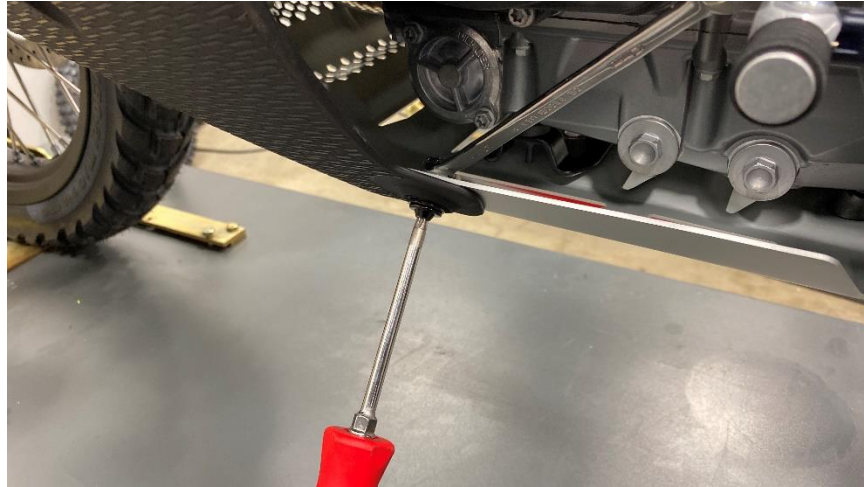
Scan these codes with your smart phone's camera or a QR code reader to get direct links to online versions of these instructions.





INSTRUCTIONS - BILLET SPIGOT

(T30 TORX / 10mm WRENCH) Remove the left side plastic panel.





(BUCKET) Using a suitable container, place it directly under the fuel pump and spigot.



(GLOVES / SAFETY GLASSES / PLIERS) Using pliers, gently twist the Oetker clamp back and forth until the band comes loose enough to be removed from the stock plastic spigot.



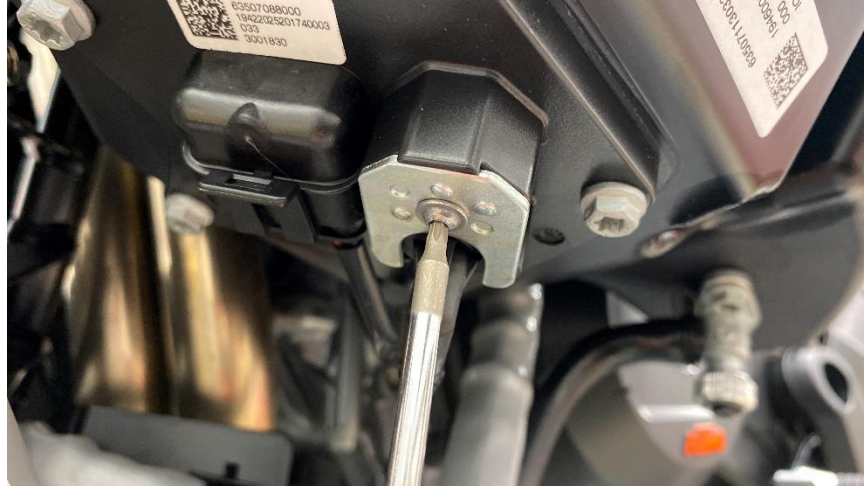


(CUTTERS) Making sure a clean container is underneath the hose, remove it from the stock spigot. You may have to cut the zip tie binding the wire and crossover line to it. A small amount of fuel will pour out.





(T10) remove the screw in the retainer plate and set aside both parts.



Gently twist the stock spigot from the fuel pump. Once again, a small amount of fuel may come out.

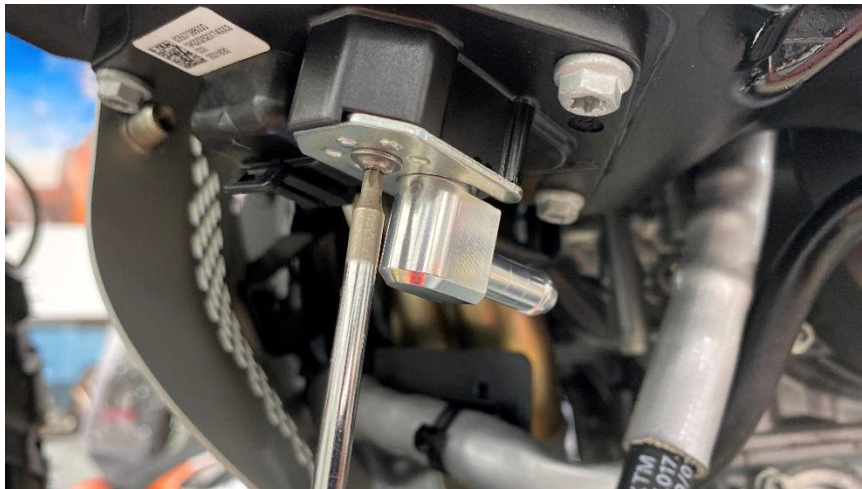




Lightly grease the Viton seals and insert the Rottweiler Performance Billet Spigot.



Reinstall the retainer plate, making sure the screw follows the same threads.



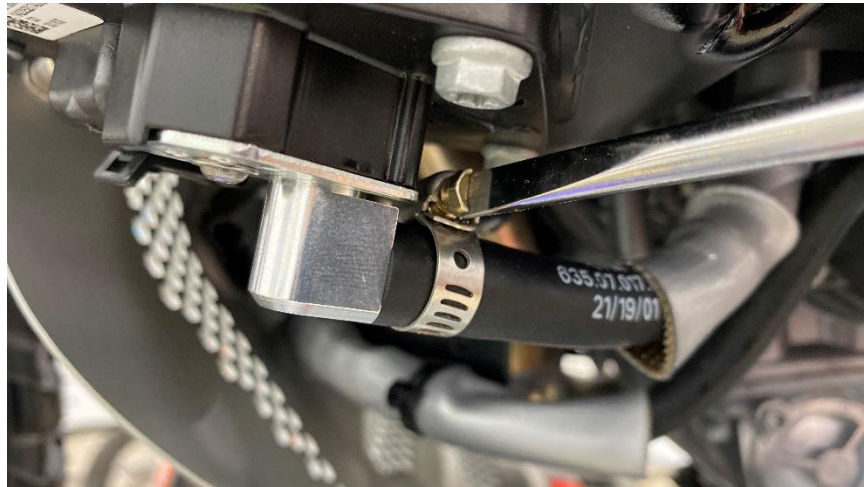


Choose which clamp you would like to use. If you have the proper tool, the Oetker clamp will match the stock method. If you wish to use the hose clamp you may choose that as well.

CRIMP FITTING (OETKER CLAMP)



HOSE CLAMP



If you did not opt for the Rottweiler Performance Fuel Pump Guard, you may now reinstall the side panel removed above and you are finished.

If you are installing the Rottweiler Performance Fuel Spigot Cover, proceed to the next steps.



INSTRUCTIONS - BILLET SPIGOT COVER

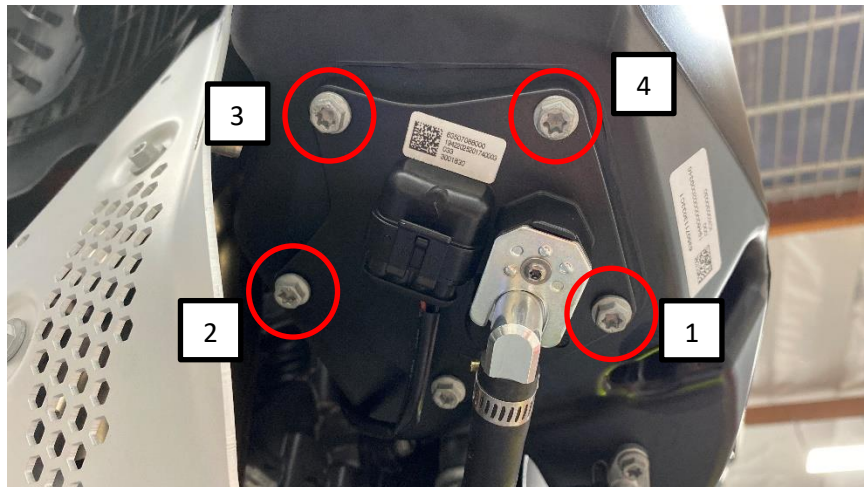
It is best to start this procedure with an empty fuel tank. Any fuel may be drained into a clean container when the fuel pump bolts are removed. Please be prepared with safety glasses and chemical resistant gloves.

METHOD A: Drain the fuel tank.

Place a suitable container below the fuel pump.



Remove the 4 screws in the order indicated below.



Be prepared for fuel to come out on the removal of screw #4.





METHOD B: Lay the bike on its side.

Place a towel on the ground and lay the bike on its side. Only the fuel tank and the passenger peg will touch the ground.





(5mm HEX) Prepare the Rottweiler Performance Spigot Cover with all of the included hardware close by.



Once the fuel is drained or the bike is laid on its right side, remove the 4 screws indicated below.



A small amount of fuel may leak. If you keep pressure on the fuel pump, or if you move quickly with the installation you can stop the leaking.



You may now reattach the flimsy fuel tank guard, or for better protection, look into [AXP](#) or [Outback Motortek](#) engine protection solutions.



You may now go enjoy your 790/890 Adventure knowing that Rottweiler Performance has got you covered!